

ADVANCIS

it's about time

Advanced Wound Care
Brochure & Indication Guide

www.advancismedical.com

Welcome to Advancis

Advancis works in partnership with healthcare professionals to develop the knowledge, tools and products for optimised wound care treatment.

- Quality educational resources for the best use of your available learning time
- Quality products for better patient outcomes and accelerated healing time
- Optimised dressing wear to reduce time, making community visits to change dressings
- Innovative product and education solutions are developed in-house, with clinical input, for reduced time to market
- Products manufactured in the UK to reduce availability issues and delivery time to where you need them.

Contents

03	Our Principles
04	Dressing Selection Guide
06	Medical Grade Manuka Honey & Dressings
08	Activon Tube
09	Activon Tulle
10	Actilite
11	Algivon
12	Algivon Plus/Ribbon & Probe
13	Activon Manuka Honey Barrier Cream
14	Eclipse Superabsorbers
16	Eclipse
17	Eclipse Non-Backed
18	Eclipse Adherent
19	Eclipse Adherent Sacral
20	Eclipse Border/Oval
21	Eclipse Foot
22	Eclipse Boot
23	Eclipse Boot Guide
24	Advazorb Foam Dressings
26	Advazorb
27	Advazorb Border
28	Advazorb Sacral
29	Advazorb Heel
30	Advazorb Areola
31	Advazorb Silfix
32	Silflex Silicone Contact Layer
34	Silflex
35	Siltape
36	Advasil Conform
37	Wound Probe
38	Ordering Information
39	References

Our Principles

Whether we are working with clinicians, nurses, carers or our own team, we always put the needs of the patient first. It is our commitment to the patient that drives our principles.

We are trusted partners

We listen to and work with clinicians to continually develop innovative wound care solutions that solve problems, reduce healing time and increase patient comfort.

We support education

We are committed to the development and education of both our people and clinicians, providing up-to-date educational content via our Education Hub.

We make a difference

We are passionate about making a

difference to our local community by way of our Community Support initiatives through projects, services and charitable support.



We innovate continually

We constantly innovate to create solutions to support the needs of clinicians and their patients. When it comes to innovative wound care solutions,

Advancis leads the way by developing 'industry first'.



Dressing Selection Guide by Indication

Product	Exudate Absorption	 NECROTIC	 SLOUGHY	 CAVITY	 GRANULATING	 EPITHELIALISING	 FUNGATING	 INFECTED	 MASD
Recommended Primary Dressing & Wound Preparation									
Activon Tube		✓	✓	✓	✓	✓	✓	✓	
Activon Tulle					✓	✓	✓	✓	
Algivon		✓	✓					✓	
Algivon Plus		✓	✓	✓				✓	
Algivon Plus Ribbon		✓	✓	✓				✓	
Actilite*					✓*	✓*	✓*	✓*	
Activon Manuka Honey Barrier Cream									✓

*Actilite should only be used with low levels of exudate

ADVANCIS

Medical Grade Manuka Honey & Dressings

Advancis Medical grade Manuka honey is available in a versatile range of wound healing products that enable you to choose the right dressing for your patient and their indications.



Broad Spectrum Antimicrobial

Considerable antimicrobial activity against a broad spectrum of wound-infecting species ¹



Reduces Odour

Effectively reduces odours associated with malodorous wounds ²



Debrides & Desloughs

Effectively desloughs and debrides wounds and absorbs exudates ³



Biofilms

Prevents formation of a wide range of common wound-infecting biofilms and can inhibit many established biofilms ²



Facilitates Autolysis

Osmotic effect draws exudate from the wound bed ⁵



Non-Cytotoxic

Non-Cytotoxic - a natural credible cost-effective alternative to more common wound therapies such as silver ⁶



Aids Healing

Can help maintain a moist wound environment and aid the healing process



ADVANCIS

ACTIVON TUBE

100% medical grade Manuka honey



Description

Activon Tube is ideal for debriding necrotic tissue, or for topping up dressings where the honey has been washed away by exudate.

Activon Tube contains 100% medical-grade Manuka honey which creates a moist healing environment and effectively eliminates wound odour whilst providing

antibacterial action.

Conveniently presented as a 20g tube, Activon Tube can be used for 90 days once opened. Activon Tube is one of the best value 100% Manuka Honey products available¹, and therefore a sensible choice for cost savings.

Indications

For use on Activon honey impregnated wound dressings or as a wound filler, directly onto the wound bed, for partial or full thickness wounds including:

- Sloughy wounds
- Pressure ulcers
- Surgical wounds
- Burns
- Graft sites
- Malodorous wounds

Ordering Information

REF	Size	Pack Size	NHSSC Code	PIP Code
CR4493	20g	12	ELY864	419-7646

Suitable for Wound Types:



ADVANCIS

ACTIVON TULLE

Knitted viscose mesh dressing impregnated with 100% Manuka honey



Description

Activon Tulle is a knitted viscose mesh primary dressing impregnated with 100% Medical Grade Manuka honey to create a moist healing environment and effectively eliminate wound odour whilst providing antibacterial action. The mesh material is conformable and non-adherent, allowing good wound coverage while reducing pain and trauma on dressing change.

Indications

May be used on all wound types including:

- Superficial wounds, partial or full thickness wounds, e.g. cuts and abrasions
- Pressure ulcers
- Leg ulcers
- Surgical wounds
- Burns
- Infected wounds
- Graft & donor sites

May assist with debridement if used in conjunction with Activon Tube.

Ordering Information

REF	Size	Pack Size	NHSSC Code	PIP Code
CR3761	5cm x 5cm	5	EJE027	304-0631
CR3658	10cm x 10cm	5	EJE028	304-0623

Suitable for Wound Types:



ADVANCIS

ACTILITE

Non-adherent viscose net dressing coated with 99% Manuka honey and 1% Manuka oil



Description

Actilite is a light, viscose net dressing, coated with 99% Manuka honey & 1% Manuka oil. This Manuka honey dressing is designed to protect the wound, promote healing and allow the passage of exudate.

The antibacterial effect of Actilite has been enhanced by combining high grade antibacterial Manuka oil with Manuka honey. The combination of Manuka honey and Manuka oil has been demonstrated in-vitro to be effective against a number of major wound infecting organisms

including MRSA, VRE and Providentia stuartii.

Manuka oil also helps scars and after marks on the skin fade away by promoting new cell growth.

Actilite is ideal for granulating and epithelialising wounds ensuring moisture levels remain low to avoid maceration while still providing a moist wound environment optimal for healing.

Ordering Information

REF	Size	Pack Size	NHSSC Code	PIP Code
CR4281	5cm x 5cm	10	EJE079	379-3759
CR3849	10cm x 10cm	10	EJE042	335-4917
CR3852	10cm x 20cm	10	EJE040	335-4925
CR4366	20cm x 30cm	10	EJE163	398-8078
CR4367	30cm x 30cm	5	EJE164	398-8086
CR4368	30cm x 60cm	5	ELY869	398-8094

Suitable for Wound Types:



ADVANCIS

ALGIVON

Alginate dressing impregnated with 100% Manuka honey



Description

Algivon is a non-adherent alginate dressing impregnated with Activon medical grade Manuka honey. It has considerable antimicrobial activity against a broad spectrum of wound-infecting species and effectively reduces odours associated with malodorous

wounds. Algivon effectively de-sloughs and de-bridges wounds and absorbs exudates, helps to maintain a moist wound environment and aids the healing process. The absorptive properties help to prolong the retention of Activon Manuka honey at a wound site.



Indications

May be used on various wound types including:

- Superficial wounds
- Partial or full thickness wounds
- Sloughy wounds
- Necrotic wounds
- Pressure ulcers
- Leg ulcers
- Surgical wounds
- Burns
- Graft sites
- Infected wounds

Ordering Information

REF	Size	Pack Size	NHSSC Code	PIP Code
CR3831	5cm x 5cm	5	ELS846	319-3711
CR3659	10cm x 10cm	5	ELS195	319-3703

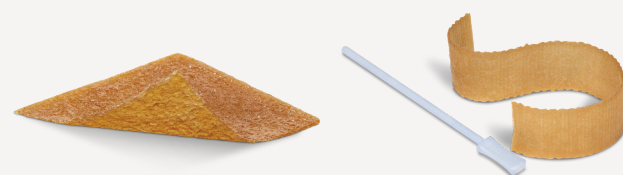
Suitable for Wound Types:



ADVANCIS

ALGIVON PLUS/RIBBON & PROBE

Reinforced alginate dressing impregnated with 100% Manuka honey



Description

Algivon Plus is a soft alginate dressing impregnated with 100% medical grade Manuka honey. This Manuka honey dressing has reinforced alginate fibres enabling a sustained, slow release of honey whilst maintaining the integrity of the dressing. This creates a moist healing environment and effectively eliminates wound odour whilst providing antibacterial action.

Algivon Plus is an ideal choice for wetter wounds as the alginate has a small capacity to absorb, meaning the honey isn't washed away with exudate therefore staying at the wound site for longer.

The dressing is very soft and conformable, ideal for debriding and desloughing large areas of sloughy tissue.

Indications

Algivon Plus may be applied to any wound but especially:

- Pressure ulcers
- Leg ulcers
- Diabetic ulcers
- Surgical wounds
- Burns
- Graft sites
- Infected wounds

Ordering Information

REF	Size	Pack Size	NHSSC Code	PIP Code
CR4230	5cm x 5cm	5	ELS549	374-9496
CR4225	10cm x 10cm	5	ELS550	374-9512

Activon Plus Ribbon & Probe

REF	Size	Pack Size	NHSSC Code	PIP Code
CR4231	2.5cm x 20cm	5	ELS551	374-4653

Suitable for Wound Types:



ADVANCIS

ACTIVON MANUKA HONEY BARRIER CREAM

Medical grade Manuka honey barrier cream



Description

Activon Manuka Honey Barrier Cream is an effective barrier against perspiration, urine and stool and wound exudate that lasts up to 24 hours.*

The formula is designed to assist with the prevention of Moisture Associated Skin Damage (MASD), it contains medical grade Manuka honey to reduce soreness

and cocoa butter to aid with moisture retention.

Indications

Activon Manuka Honey Barrier Cream is designed to moisturise and provide transparent, quick drying protection from Moisture Associated Skin Damage (MASD) on vulnerable, intact and mildly irritated/damaged skin. Its application helps to prevent irritation and skin breakdown from incontinence, other bodily fluids (sweat, wound exudate, stoma leakage), adhesive products, and friction.

Ordering Information

REF	Size	Pack Size	NHSSC Code	PIP Code
CR4546	100g	1	ELZ85134	435-4411

Suitable for Wound Types:



ADVANCIS

Eclipse Super Absorbent Dressings

The Eclipse range of super absorbent dressings are designed to effectively manage moderate and high levels of exudate, lessening the necessity for frequent dressing changes, and the associated distress to the patient.



Super Absorbent Core

For moderate to high exudate management
2 fluid management levels available for optimal wound bed moisture retention



Strikethrough Resistant

Water resistant backing layer prevents strikethrough⁶ increasing patient quality of life⁷



CrystaLock Technology

Locks away exudate, bacteria and MMPs⁸



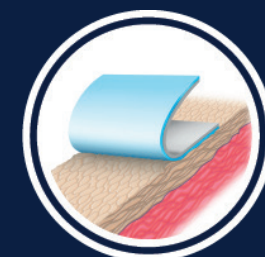
Works Under Compression

Remains absorbent under compression



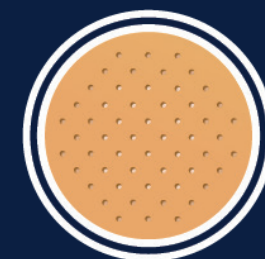
Sub-Bandage Pressure

Does not affect compression sub-bandage pressure⁹



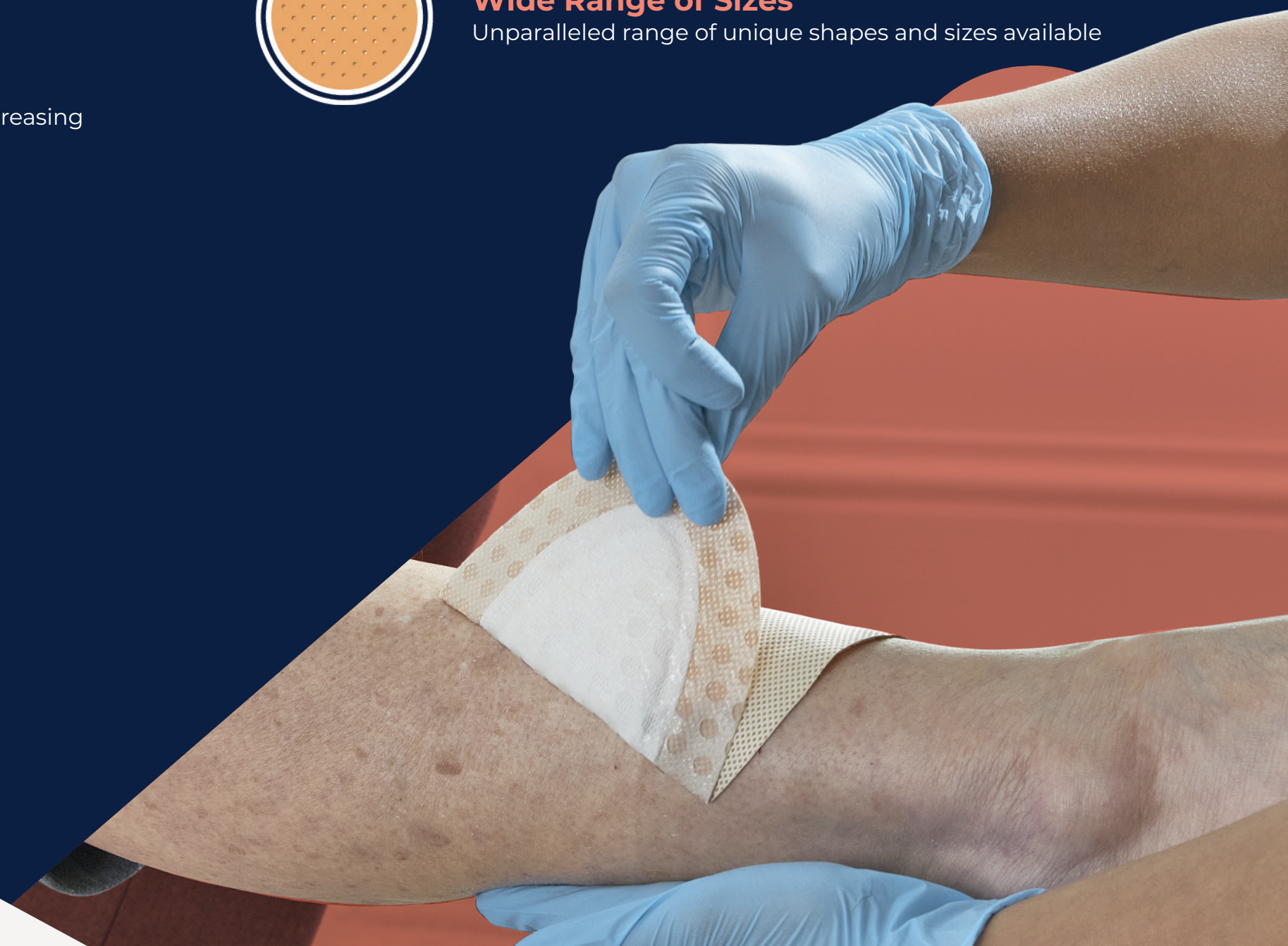
Atraumatic

Adhesive border and silicone contact layer versions available for ease of application and atraumatic dressing changes



Wide Range of Sizes

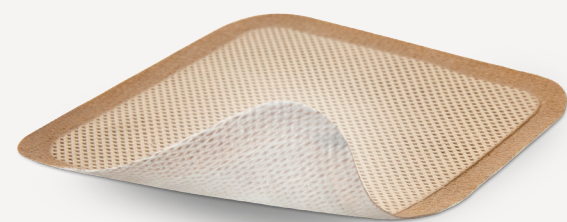
Unparalleled range of unique shapes and sizes available



ADVANCIS

ECLYPSE

Super absorbent dressing



Description

Eclipse is a highly absorbent, high capacity wound exudate management product designed to absorb fluid, reduce potential leaks and reduce risk of maceration.

Eclipse has a rapid wicking face combined with the highly absorbent moisture locking system. The absorbent layer provides a large capacity with rapid fluid uptake forming a gel when in contact with exudate. The backing is

a water resistant barrier film to prevent strikethrough with a high moisture vapour transfer rate prolonging wear ability.

Ordering Information

REF	Size	Pack Size	NHSSC Code	PIP Code
CR3818	10cm x 10cm	20	EJE029	372-1057
CR3769	15cm x 15cm	20	EJE032	305-1349
CR4460	10cm x 20cm	10	EJE85006	408-7813
CR4439	20cm x 20cm	10	EJE185	408-7805
CR3743	20cm x 30cm	20	EJE030	306-1272
CR3808	60cm x 40cm	10	EJE034	232-1131

Suitable for Wound Types:



ADVANCIS

ECLYPSE NON-BACKED

Non-backed super absorbent dressing



Description

Eclipse Non-Backed is the next generation of non-backed super absorbers. It features a double CrystaLock Technology layer, Advancis Medical's unique superabsorbent crystals which form a gel when in contact with exudate, separated by a lateral wicking layer, and two non-adherent outer layers.

CrystaLock Technology is highly absorbent and locks away exudate, reducing potential leaks and the risk of maceration. With a high level of absorbency, the need for stacking is reduced so more than one dressing per change is rarely needed.

The outer layer of Eclipse Non-Backed is comfortable and flexible to allow the dressing to contour to the body. As this layer is on both sides of the dressing, you can simply place either side down on the wound.

Although stacking isn't usually needed, it is possible to do so with Eclipse Non-Backed for those extremely high exuding wounds that you are worried will leak before the next dressing change. You can even combine Eclipse Non-Backed with original Eclipse to take advantage of its non-strikethrough backing.

Ordering Information

REF	Size	Pack Size	PIP Code
CR4516	10cm x 10cm	20	419-7836
CR4517	10cm x 20cm	10	419-7844
CR4518	20cm x 20cm	10	419-7935
CR4519	20cm x 30cm	20	419-7927

Suitable for Wound Types:



Indications

Moderate to heavily exuding wounds such as:

- Leg ulcers
- Pressure ulcers
- Diabetic foot ulcers
- Sloughy wounds
- Granulating wounds
- Lymphatic legs
- Post-operative sutured or dehisced wounds
- Ulcerating cancer wounds
- Donor site management

Indications

Moderate to heavily exuding wounds such as:

- Leg ulcers
- Pressure ulcers
- Diabetic foot ulcers
- Sloughy wounds
- Granulating wounds
- Lymphatic legs
- Post-operative and dehisced wounds
- Ulcerating cancer wounds
- Donor sites

ADVANCIS

ECLYPSE ADHERENT

Super absorbent dressing with soft silicone contact layer



Description

Eclipse Adherent incorporates the high absorbency capabilities of Eclipse with a soft silicone contact layer for gentle adherence.

The dressing includes a Silfix soft silicone wound contact layer to reduce pain and tissue damage on removal, as well as

a rapid wicking layer, highly absorbent CrystaLock layer and a non-strikethrough backing to prevent leakage.

Available in a variety of sizes to suit patient needs, Eclipse Adherent is strong and durable while remaining conformable to ensure good wound coverage.

Ordering Information

REF	Size	Pack Size	NHSSC Code	PIP Code
CR3881	10cm x 10cm	10	EKH034	325-2293
CR3883	10cm x 20cm	10	EKH011	325-2269
CR3863	15cm x 15cm	10	EKH036	325-2277
CR3864	20cm x 30cm	10	EKH015	325-2285

Suitable for Wound Types:



- Moderate to heavily exuding wounds such as:
- Leg ulcers
- Pressure ulcers
- Diabetic foot ulcers
- Sloughy wounds
- Granulating wounds
- Lymphatic legs
- Post-operative sutured or dehiscent wounds
- Ulcerating cancer wounds
- Donor site management

ADVANCIS

ECLYPSE ADHERENT SACRAL

Super absorbent sacral dressing



Description

Eclipse Adherent Sacral is a super absorbent, wound exudate management dressing designed by experts to contour to the sacral area. The dressing combines a Silfix soft silicone wound contact layer for convenient gentle adherence, a rapid wicking layer, a highly absorbent

CrystaLock layer, a sub-backing layer for even distribution of exudate and a non-strikethrough backing to prevent leakage.

Eclipse Adherent Sacral will only adhere to dry skin surrounding the wound and can be easily lifted for adjustment without losing its adherent properties.

Ordering Information

REF	Size	Pack Size	NHSSC Code	PIP Code
CR3985	17cm x 19cm	10	EME043	348-2213
CR3986	22cm x 23cm	10	EME044	348-2239

Suitable for Wound Types:



Indications

Moderate to heavily exuding wounds on the sacral area such as pressure ulcers.

ADVANCIS

ECLYPSE BORDER/OVAL

Super absorbent dressing with soft silicone contact layer



Description

Eclipse Border is a super absorbent dressing with a self-adhesive soft silicone contact layer and hypoallergenic border. The soft silicone layer provides gentle adherence and will facilitate atraumatic removal and the hypoallergenic border allows further adhesion.

The dressing combines a Silfix soft silicone wound contact layer for convenient gentle adherence, a rapid

wicking layer, a highly absorbent CrystaLock layer, a sub-backing layer for even distribution of exudate and a non-strikethrough backing to prevent leakage.

Eclipse Border will only adhere to dry skin surrounding the wound and can be easily lifted for adjustment without losing its adherent properties.

Ordering Information

	REF	Size	Pack Size	NHSSC Code	PIP Code
OVAL	CR4296	15cm x 15cm	10	EKH061	383-6897
	CR4297	20cm x 30cm	10	EKH062	383-6905
	CR4300	10cm x 20cm	10	EKH063	383-5881
	CR4299	15cm x 20cm	10	EKH064	383-5899
	CR4298	20cm x 30cm	10	EKH065	383-5907

Suitable for Wound Types:



ADVANCIS

ECLYPSE FOOT

Super absorbent foot wrap dressing



Description

Eclipse Foot is a highly absorbent, high capacity wound exudate management product, designed by experts to be securely fitted to the foot area to manage wound exudate.

Eclipse Foot contains a rapid wicking layer combined with CrystaLock Technology - a highly absorbent

moisture locking system. The absorbent layer provides a large capacity with rapid fluid uptake. The backing is a water resistant barrier film to prevent strikethrough with a high moisture vapour transfer rate, prolonging wear ability.

Indications

For moderate to heavily exuding wounds such as:

- Leg ulcers
- Pressure ulcers
- Diabetic foot ulcers

Ordering Information

REF	Size	Pack Size	NHSSC Code	PIP Code
CR4219	33cm x 48cm	5	EJE086	376-5468

Suitable for Wound Types:



ADVANCIS

ECLYPSE BOOT

Super absorbent leg wrap dressing



Description

Eclipse Boot is a highly absorbent, high capacity wound exudate management product, designed by experts to be securely fitted to the lower limb area to manage wound exudate.

Eclipse Boot contains a rapid wicking layer combined with CrystaLock Technology - a highly absorbent moisture

locking system. The absorbent layer provides a large capacity with rapid fluid uptake. The backing is a water resistant barrier film to prevent strikethrough with a high moisture vapour transfer rate prolonging wear ability.

Indications

Moderate to heavily exuding wounds such as:

- Leg ulcers
- Pressure ulcers
- Diabetic foot ulcers
- Sloughy wounds
- Granulating wounds
- Lymphatic legs

Ordering Information

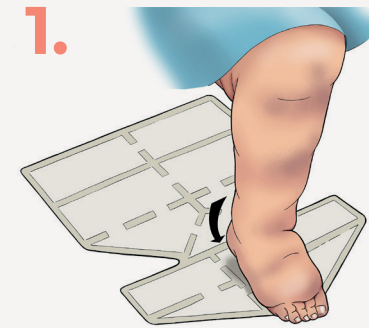
REF	Size	Pack Size	NHSSC Code	PIP Code
CR4237	Small 55cm x 47cm	5	EJE085	380-4630
CR4014	Large 60cm x 70cm	5	EME042	347-6207
CR4229	X Large 71cm x 80cm	5	EJE186	408-0750

Suitable for Wound Types:



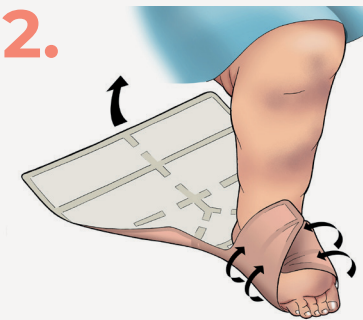
Advancis Eclipse Boot Guide

1.



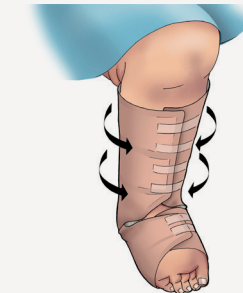
Place heel on the back fold line of Section A.

2.

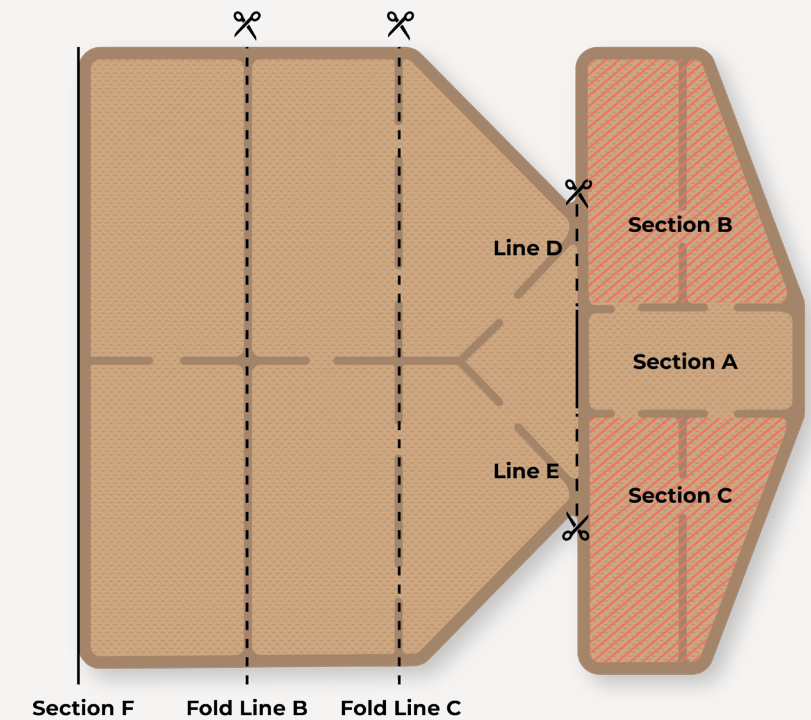


Fold Sections B and C over the top of the foot, cutting Lines D and E to make this easier if necessary. Pull up the back of the dressing towards the back of the knee (Section F).

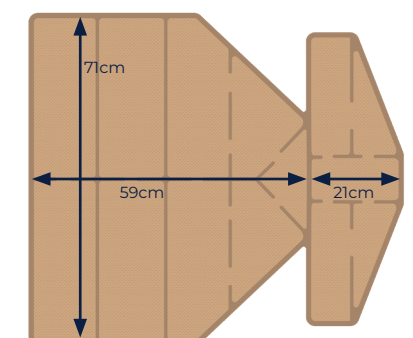
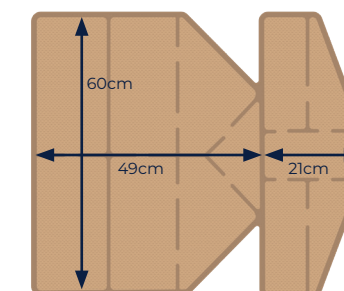
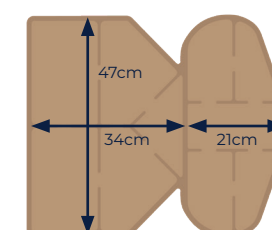
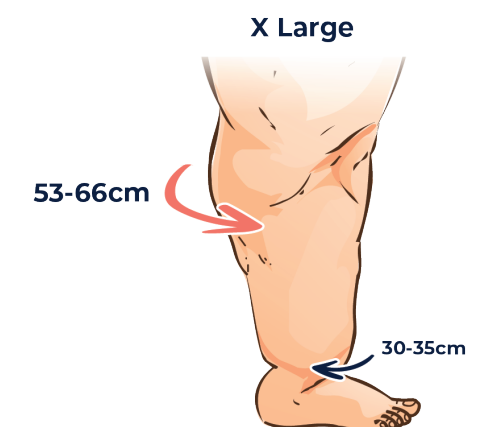
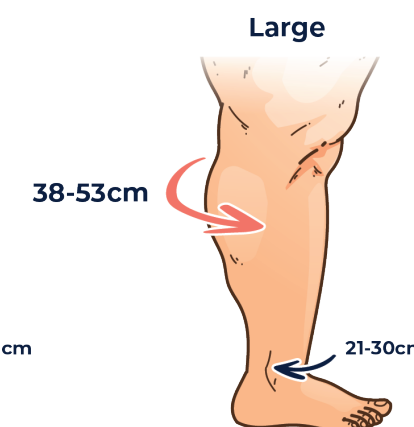
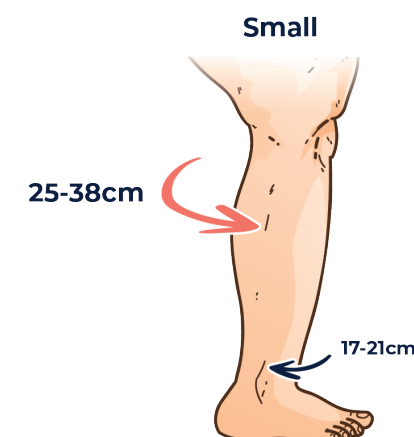
3.



Then wrap the remaining sides around the leg and secure with fixing tape. Can cut along Fold Lines B or C to adjust the height, if required.



Measuring & Size Guide



ADVANCIS

Advazorb Foam Dressings

Advazorb is a versatile range of clinically proven, patient-friendly, absorbent foam dressings, designed for a diverse range of wound healing requirements.



Foam Core

Foam core for low to moderate exudate management



Fluid Handling

Excellent fluid handling to maintain moist wound healing environment



Water Resistant

Water resistant backing layer prevents strikethrough



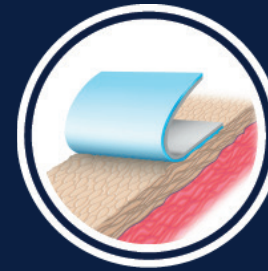
Effective Under Compression

High fluid retention and effective under compression



Conformable

Soft and conformable for wearable comfort



Atraumatic

Adhesive border and silicone contact layer versions available for ease of application and atraumatic dressing changes



No Rucking

Low friction backing prevents rucking



ADVANCIS

ADVAZORB

Absorbent foam dressings with film backing



Description

Advazorb is a soft and conformable, low-adherent, hydrophilic, polyurethane foam dressing with a breathable film backing.

A non-adherent foam dressing with excellent fluid handling properties, Advazorb is suitable for wounds with low to medium levels of exudate and is ideal for use under compression bandaging with its fluid retention, low profile and low friction film backing.

The Advazorb range features a waterproof film backing that prevents strikethrough. The backing has been designed to reduce friction on clothes and bandages which extends dressing wear time by reducing 'rucking' and preventing dressings falling off.

With a high MVTR the Advazorb foam range provides the ideal conditions for wound healing.

Indications

Suitable for a wide range of exuding wounds:

- Granulating wounds
- Leg ulcers, pressure sores
- Protection of bony prominences

Ordering Information

REF	Size	Pack Size	NHSSC Code	PIP Code
CR4165	7.5cm x 7.5cm	10	ELA526	367-0999
CR4166	10cm x 10cm	10	ELA453	367-1005
CR4167	12.5cm x 12.5cm	10	ELA712	367-1013

REF	Size	Pack Size	NHSSC Code	PIP Code
CR4168	15cm x 15cm	10	ELA712	367-1021
CR4169	10cm x 20cm	10	ELA1274	367-1039
CR4170	20cm x 20cm	10	ELA708	367-1047
CR4221	5cm x 5cm	10	ELA1265	374-4638

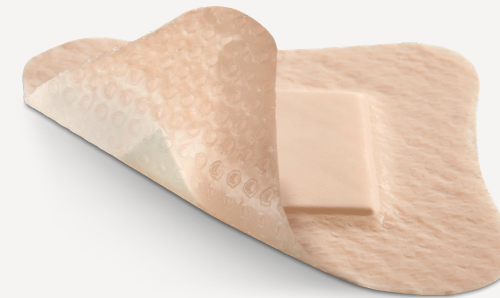
Suitable for Wound Types:



ADVANCIS

ADVAZORB BORDER

Absorbent foam dressing with soft silicone wound contact layer and border



Description

Advazorb Border is an absorbent, atraumatic, self-adhesive bordered dressing with a unique perforated soft silicone wound contact layer. This range is ideal for wounds with low to medium levels of exudate.

The silicone wound contact layer has multiple, small 2mm pores which enable

the passage of exudate into the absorbent foam whilst protecting the fragile wound bed. This combination ensures the dressings comfortably stay in place whilst minimising the potential for maceration.

Indications

A wide range of exuding wounds including:

- Leg, foot and pressure ulcers
- Traumatic wounds
- Surgical wounds
- Abrasions and blisters

Ordering Information

Products also available in Lite, See page 38

REF	Size	Pack Size	NHSSC Code	PIP Code
CR4190	7.5cm x 7.5cm	10	ELA547	367-0650
CR4191	10cm x 10cm	10	ELA1280	367-0668
CR4192	12.5cm x 12.5cm	10	ELA1267	367-0676
CR4193	15cm x 15cm	10	ELA550	367-0684
CR4194	10cm x 20cm	10	ELA551	367-0692
CR4195	20cm x 20cm	10	ELA552	367-0718
CR4196	10cm x 30cm	10	ELA553	367-0726

Suitable for Wound Types:



ADVANCIS

ADVAZORB SACRAL

Absorbent foam sacral dressing with film backing



Description

Advazorb Sacral is a hydrophilic foam dressing designed by experts to contour to the sacral area, for wounds with low to medium levels of exudate.

With a Silfix soft silicone wound contact layer for convenient gentle adherence, Advazorb Sacral will only adhere to dry

skin surrounding the wound and can be easily lifted for adjustment without losing its adherent properties.

Indications

For all exuding wounds on the sacral area, for example:

- Pressure ulcers

Ordering Information

REF	Size	Pack Size	NHSC Code	PIP Code
CR4401	17cm x 19cm	10	ELA1261	401-0658
CR4402	22cm x 23cm	10	ELA1271	401-0666

Suitable for Wound Types:



ADVANCIS

ADVAZORB HEEL

Absorbent foam dressing with film backing



Description

Advazorb Heel is a conformable, non-adherent, hydrophilic, polyurethane foam dressing with a breathable film backing designed to fit around the heel. Ideally, this range is for wounds with low to medium levels of exudate.

A non-adherent foam dressing with excellent fluid handling properties. Ideal for use under compression bandaging with its fluid retention, low profile and low friction film backing.

Indications

Suitable for acute and chronic wounds including:

- Cuts and abrasions
- Superficial burns
- Surgical wounds
- Leg ulcers
- Pressure ulcers
- Diabetic ulcer

Ordering Information

REF	Size	Pack Size	NHSC Code	PIP Code
CR4228	17cm x 21cm	5	ELA625	374-4646

Suitable for Wound Types:



ADVANCIS

ADVAZORB AREOLA

Absorbent foam areola dressing with Silfix soft silicone adhesive border



Description

Advazorb Areola is an innovative breast dressing, ergonomically designed to fit the contours of the breast making dressing application easy, quick and comfortable for the patient.

Designed in collaboration with Nottingham University Hospitals and Nottingham Breast Institute, Advazorb Areola fulfils a very specific need – a protective and secure breast dressing that reduces the need for clinicians to create their own dressing from a patchwork of

square dressings.

Advazorb Areola combines Silfix soft silicone with conformable, absorbent foam to deliver excellent patient comfort, effective exudate management, secure fixation and atraumatic removal. The central hole prevents pressure on the nipple, including incisions to accommodate larger nipples, and a low friction backing prevents uncomfortable snagging on clothes.

Ordering Information

REF	Size	Pack Size
CR4490	13cm x 13cm	10

Suitable for Wound Types:



ADVANCIS

ADVAZORB SILFIX

Absorbent foam dressing with soft silicone wound contact layer



Description

Advazorb Silfix combines the excellent fluid handling capabilities of Advazorb with a layer of atraumatic soft silicone adhesive, enabling the dressing to be placed onto the patient whilst a secondary dressing or bandage is applied for retention. Ideally, this range is for wounds with low to medium levels of exudate.

The soft silicone ensures that the dressing does not stick to the wet surface of a wound bed or cause trauma to new tissue upon dressing removal. This is particularly suited to those patients with friable or delicate skin, and an ideal choice for sensitive wounds as repeated dressing applications will not cause epithelial skin stripping.

Ordering Information

REF	Size	Pack Size	NHSSC Code	PIP Code
CR4177	7.5cm x 7.5cm	10	ELA535	367-0494
CR4178	10cm x 10cm	10	ELA536	367-0502
CR4179	12.5cm x 12.5cm	10	ELA641	367-0510
CR4180	15cm x 15cm	10	ELA538	367-0528
CR4181	10cm x 20cm	10	ELA539	367-0536
CR4182	20cm x 20cm	10	ELA540	367-0544

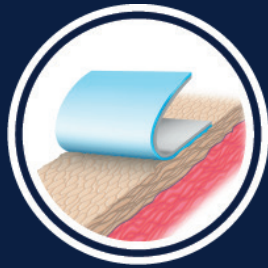
Suitable for Wound Types:



ADVANCIS

Silflex Silicone Contact Layer Dressings

Silflex is an atraumatic wound contact layer dressing made from polyester mesh coated on both sides with Silfix soft silicone.



Atraumatic Silicone Coating

Reduced pain during application and dressing changes



Non-Adherent

Does not adhere to the wound bed or secondary dressing



High Exudate Transfer

Large open pores allow exudate to easily pass through to the secondary dressing



Easy to Use

Easy to handle and does not adhere to itself



Conformable

Highly conformable for increased patient compliance ¹⁰



NPWT Compatible

Can be used in conjunction with Negative Pressure Wound Therapy ¹¹



ADVANCIS

SILFLEX

Soft silicone wound contact layer



Description

Silflex is a wound contact, non-adherent dressing made from polyester mesh coated with an atraumatic, hydrophobic soft silicone, making it useful for patients with very thin, friable tissue.

Silflex is designed to gently adhere to the skin surrounding a wound and not to

the wound bed to reduce the pain and trauma associated with dressing change. With 2mm pore holes Silflex allows the passage of exudate through the dressing.

Due to its gentle application and removal, Silflex is an ideal solution for treating and preventing skin tears.

Indications

- Skin tears
 - Skin abrasions
 - Surgical wounds
 - Lacerations
 - Leg and pressure ulcers
- May be used under Negative Pressure Wound Therapy.

Ordering Information

REF	Size	Pack Size	NHSSC Code	PIP Code
CR3922	5cm x 7cm	10	EKH028	338-4385
CR3923	8cm x 10cm	10	EKH029	338-4393
CR3924	12cm x 15cm	10	EKH030	338-4401
CR3925	20cm x 30cm	10	EKH032	338-4419
CR4006	35cm x 60cm	5	EKH096	348-2205

Suitable for Wound Types:



ADVANCIS

SILTAPE

Soft silicone fixation tape



Description

Siltape is a soft silicone fixation tape delivered on a roll with perforations for ease of use.

Siltape is made from Silicone that is gentler on removal unlike other adhesives

that may cause tissue damage when removed, and is particularly useful on patients with very thin, friable skin.

Indications

Siltape can be used in any situation where a regular adhesive tape would be used where friable or sensitive skin is an issue.

- For taping down eyelids for theatre.
- For securing fistula needles as it can be repositioned.
- For protecting friable tissue from pressure damage or sores from tubing; this is especially useful on the face and top of the ears. Siltape can be applied directly to the skin and tubing placed on top.
- For scar management.

Ordering Information

REF	Size	Pack Size	NHSSC Code	PIP Code
CR3938	2cm x 3m	12	EHR053	344-0336
CR3939	4cm x 1.5m	12	EHR054	344-0328

Suitable for Wound Types:



ADVANCIS

ADVASIL CONFORM

Silicone gel sheet for scar management



Description

Advasil Conform is a sheet of medical grade, self-adherent silicone gel for the management of scar tissue or recently healed wounds. Silicone gel sheets are reported to help reduce the effects of scarring if worn for prolonged periods. Hypertrophic and keloid scarring may particularly benefit from Advasil Conform.

Composed of a conformable layer of translucent Silfix silicone gel approved for skin contact, and a smooth polyurethane outer layer, Advasil Conform reduces pain and trauma at dressing changes, improving wear ability and patient compliance.

Advasil Conform is washable and can be used for up to 28 days once open.

Indications

For the management of hypertrophic scars and keloid scars.

Ordering Information

REF	Size	Pack Size	NHSSC Code	PIP Code
CR3845	10cm x 10cm	5	EKH006	301-1640
CR3832	10cm x 15cm	5	ELY178	329-5979

Suitable for Wound Types:



ADVANCIS

WOUND PROBE

15cm sterile wound size assessment probe



Description

The Advancis Wound Probe is a single-use, disposable device designed for wound assessment.

It is used to measure the dimensions of a wound, including its width, length, and depth, to provide a comprehensive evaluation of wound size.

The probe body is strong, long, narrow and flexible, allowing for the assessment of single tracked sinus wounds, where only a primary track is present.

The probe can also be used to gently pack dressings.

To reduce trauma during assessment, the probe is smooth and has no raised or indented markings.

The ergonomic probe handle is ridged and designed to be easily gripped between finger and thumb while wearing medical gloves.

Indications

Assessment of wound size (width, length and depth) and dressing of wounds.

Ordering Information

REF	Size	Pack Size	NHSSC Code
CR4223	15cm	10	ELZ864
CR4236	15cm	50	ELZ865

Suitable for Wound Types:



Ordering Information

Medical Grade Manuka Honey & Dressings

Product	Stock Code	Size	Pack Size	NHSSC Code	Pip Code
Actilite	CR4281	5cm x 5cm	10	EJE079	379-3759
	CR3849	10cm x 10cm	10	EJE042	335-4917
	CR3852	10cm x 20cm	10	EJE040	335-4925
	CR4366	20cm x 30cm	10	EJE163	398-8078
	CR4367	30cm x 30cm	5	EJE164	398-8086
	CR4368	30cm x 60cm	5	ELY869	398-8094
Activon Tube	CR4493	20g	12	ELY864	419-7646
Activon Tulle	CR3761	5cm x 5cm	5	EJE027	304-0631
	CR3658	10cm x 10cm	5	EJE028	304-0623
Algivon	CR3831	5cm x 5cm	5	ELS846	319-3711
	CR3659	10cm x 10cm	5	ELS195	319-3703
Algivon Plus	CR4230	5cm x 5cm	5	ELS549	374-9496
	CR4225	10cm x 10cm	5	ELS550	374-9512
Algivon Plus Ribbon <small>(with wound probe)</small>	CR4231	2.5cm x 20cm	5	ELS551	374-4653
Activon Manuka Honey Barrier Cream	CR4546	100g	1	ELZ85134	435-4411
Eclypse Super Absorbent Dressings					
Product	Stock Code	Size	Pack Size	NHSSC Code	Pip Code
Eclypse	CR3818	10cm x 10cm	20	EJE029	372-1057
	CR4460	10cm x 20cm	10	EJE85006	408-7813
	CR3769	15cm x 15cm	20	EJE032	305-1349
	CR4439	20cm x 20cm	10	EJE185	408-7805
	CR3743	20cm x 30cm	20	EJE030	306-1272
	CR3808	60cm x 40cm	10	EJE034	232-1131
Eclypse Adherent	CR3881	10cm x 10cm	10	EKH034	325-2293
	CR3883	10cm x 20cm	10	EKH011	325-2269
	CR3863	15cm x 15cm	10	EKH036	325-2277
	CR3864	20cm x 30cm	10	EKH015	325-2285
Eclypse Adherent Sacral	CR3985	17cm x 19cm	10	EME043	348-2213
	CR3986	22cm x 23cm	10	EME044	348-2239
Eclypse Border	CR4296	15cm x 15cm	10	EKH061	383-6897
	CR4297	20cm x 30cm	10	EKH062	383-6905
Eclypse Border Oval	CR4300	10cm x 20cm	10	EKH063	383-5881
	CR4299	15cm x 20cm	10	EKH064	383-5899
	CR4298	20cm x 30cm	10	EKH065	383-5907
Eclypse Foot	CR4219	33cm x 48cm	5	EJE086	376-5468
Eclypse Boot	CR4237	55cm x 47cm	5	EJE085	380-4630
	CR4014	60cm x 70cm	5	EME042	347-6207
	CR4229	71cm x 80cm	5	EJE186	408-0750
Eclypse Non-Backed	CR4516	10cm x 10cm	20	EJA85033	419-7836
	CR4517	10cm x 20cm	10	EJA85031	419-7844
	CR4518	20cm x 20cm	10	EJA85032	419-7935
	CR4519	20cm x 30cm	20	EJA85030	419-7927

Advazorb Foam Dressings

Product	Stock Code	Size	Pack Size	NHSSC Code	Pip Code
Advazorb	CR4221	5cm x 5cm	10	ELA1265	374-4638
	CR4165	7.5cm x 7.5cm	10	ELA526	367-0999
	CR4166	10cm x 10cm	10	ELA453	367-1005
	CR4167	12.5cm x 12.5cm	10	ELA85174	367-1013
	CR4168	15cm x 15cm	10	ELA712	367-1021
	CR4169	10cm x 20cm	10	ELA1274	367-1039
	CR4170	20cm x 20cm	10	ELA708	367-1047
Advazorb Silfix	CR4177	7.5cm x 7.5cm	10	ELA535	367-0494
	CR4178	10cm x 10cm	10	ELA536	367-0502
	CR4179	12.5cm x 12.5cm	10	ELA641	367-0510
	CR4180	15cm x 15cm	10	ELA538	367-0528
	CR4181	10cm x 20cm	10	ELA539	367-0536
	CR4182	20cm x 20cm	10	ELA540	367-0544
Advazorb Border	CR4190	7.5cm x 7.5cm	10	ELA547	367-0650
	CR4191	10cm x 10cm	10	ELA1280	367-0668
	CR4192	12.5cm x 12.5cm	10	ELA1267	367-0676
	CR4193	15cm x 15cm	10	ELA550	367-0684
	CR4194	10cm x 20cm	10	ELA551	367-0692
	CR4195	20cm x 20cm	10	ELA552	367-0718
	CR4196	10cm x 30cm	10	ELA553	367-0726
Advazorb Border Lite	CR4197	7.5cm x 7.5cm	10	ELA554	367-0734
	CR4198	10cm x 10cm	10	ELA555	367-0742
	CR4199	12.5cm x 12.5cm	10	ELA556	367-0759
	CR4200	15cm x 15cm	10	ELA557	367-0767
	CR4201	10cm x 20cm	10	ELA558	367-0775
	CR4202	20cm x 20cm	10	ELA559	367-0783
	CR4203	10cm x 30cm	10	ELA560	367-0791
Advazorb Heel	CR4228	17cm x 21cm	5	ELA625	374-4646
Advazorb Sacral	CR4401	17cm x 19cm	10	ELA1261	401-0658
	CR4402	22cm x 23cm	10	ELA1271	401-0666
Advazorb Areola	CR4490	13cm x 13cm	10	N/A	N/A

Silflex Silicone Contact Layer Dressings

Product	Stock Code	Size	Pack Size	NHSSC Code	Pip Code
Silflex	CR3922	5cm x 7cm	10	EKH028	338-4385
	CR3923	8cm x 10cm	10	EKH029	338-4393
	CR3924	12cm x 15cm	10	EKH030	338-4401
	CR3925	20cm x 30cm	10	EKH032	338-4419
	CR4006	35cm x 60cm	5	EKH096	348-2205
Advasil Conform	CR3845	10cm x 10cm	5	EKH006	301-1640
	CR3832	10cm x 15cm	5	ELY178	329-5979
Siltape	CR3938	2cm x 3m	1	EHR053	344-0336
	CR3939	4cm x 1.5m	1	EHR054	344-0328

Wound Probe

Product	Stock Code	Size	Pack Size	NHSSC Code	Pip Code
Wound Probe	CR4223	15cm	10	ELZ864	N/A
	CR4236	15cm	50	ELZ865	N/A

References

- Cooper RA, Jenkins L, Henriques AFM, Duggan RS, Burton NF (2010) Absence of bacterial resistance to medical grade manuka honey. Eur J Clin Microbial Infect Dis 29: 1237-41
- White RJ. (2016) Manuka honey in wound management: greater than the sum of its parts? Journal of Wound Care Vol 25, No 9, September 2016
- Evans, J. and Mahoney, K. (2013) Efficacy of medical-grade honey as an autolytic debridement agent. Wounds UK, Vol 9
- Topham, J. Sugar for wounds. J Tissue Viability 2000; 10: 3, 86–89
- Du Toit DF, Page BJ. An in vitro evaluation of the cell toxicity of honey and silver dressings. J Wound Care. 2009 Sep;18(9):383-9. doi: 10.12968/jowc.2009.18.9.44307. PMID: 19789475
- Rafter, L. Anthony, D. Collier, M. Rafter, R. (2015) Stopping the strikethrough: An audit of patient outcomes on four superabsorbent dressings. Wounds UK Vol 11, No 4, 60-67
- Faucher N, Safar H, Baret M, Phillippe, A, Farid, R. (2015) Superabsorbent dressing for copiously exuding wounds. Br J Nurs (Tissue Viability Supplement). 21, 12, S22-28
- Weigland, C. White, R. (2013) Binding and inhibition of protease enzymes, including MMPs, by superabsorbent in vitro. Journal of Wound Care Vol 22, No 5
- Cook, L (2011) Effect of super-absorbent dressing on compression sub-bandage pressure. Br J Comm Nurs 16(3 Suppl): 38-43
- Developing a structured process for evaluating burn dressings. Edwards Jacky & Mason Sally Ann, Wythenshaw Hospital, Manchester
- The use of a soft silicone wound contact dressing (Silflex) under topical negative pressure dressing. Rajpaul Kumal, Kings College Hospital, London



Education Hub

Visit the Advancis Education Hub

A dedicated space for healthcare professionals:

- Wound care fundamentals courses
- Continuing Professional Development (CPD) courses
- Wound care application and product usage tips with Tissue Viability Nurses
- Wound and product selection guides
- Wound care research and clinical updates
- Advancis product case studies and clinical evaluations

www.advancismedical.com/education

